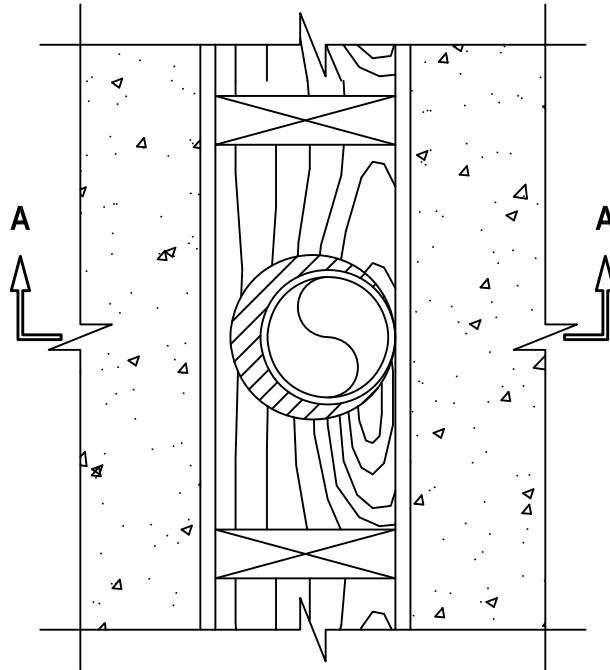


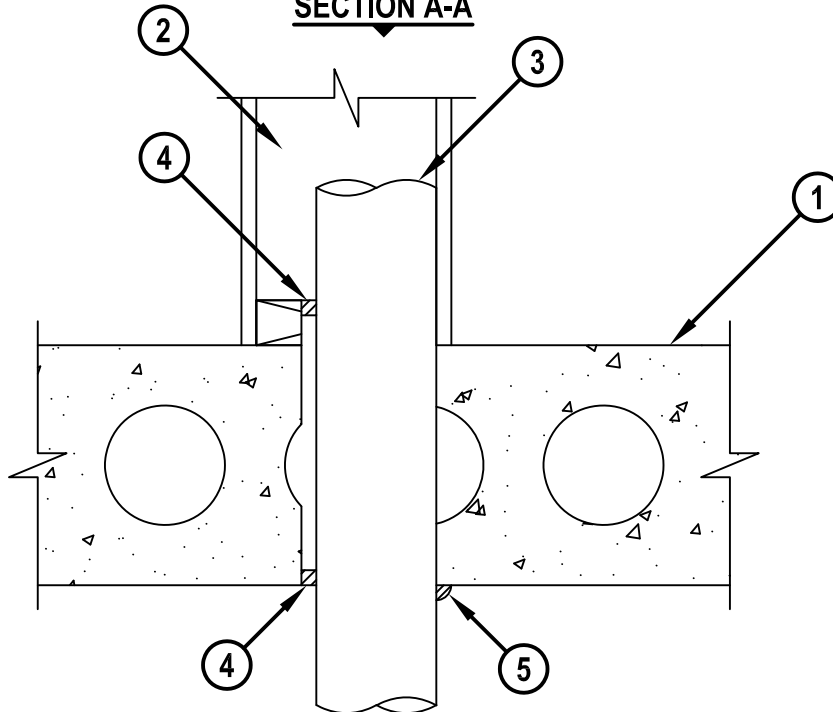
UL/cUL SYSTEM NO. F-B-1035
METAL PIPE THROUGH CONCRETE FLOOR ASSEMBLY

F-RATING = 2-HR.
T-RATING = 1/4-HR.

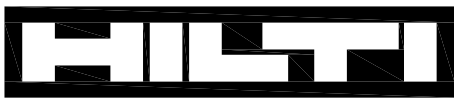
TOP VIEW



SECTION A-A



FB1035b.032718



Hilti Firestop Systems

HILTI, Inc.
Plano, Texas USA (800) 879-8000

Sheet	1 of 2
Scale	3/32" = 1"
Date	Mar. 27, 2018

Drawing No.

**FB
1035b**

Saving Lives through Innovation and Education

METAL PIPE THROUGH CONCRETE FLOOR ASSEMBLY

F-RATING = 2-HR.
T-RATING = 1/4-HR.

FB1035b.032718

1. CONCRETE FLOOR ASSEMBLY (2-HR. FIRE-RATING) :
 - A. LIGHTWEIGHT OR NORMAL WEIGHT CONCRETE FLOOR (MINIMUM 8" THICK).
 - B. ANY UL CLASSIFIED PRECAST HOLLOW-CORE FLOOR ASSEMBLY (MINIMUM 8" THICK).
2. [OPTIONAL] GYPSUM WALL ASSEMBLY (UL/cUL CLASSIFIED U300 SERIES) (RATED OR NON-RATED) CONSISTING OF NOMINAL 2" x 4", 2" x 6", OR PARALLEL 2" x 4" LUMBER PLATES AND STUDS.
3. PENETRATING ITEM TO BE ONE OF THE FOLLOWING :
 - A. MAXIMUM 4" NOMINAL DIAMETER STEEL PIPE (SCHEDULE 10 OR HEAVIER).
 - B. MAXIMUM 4" NOMINAL DIAMETER CAST OR DUCTILE IRON PIPE.
 - C. MAXIMUM 4" NOMINAL DIAMETER COPPER PIPE OR TUBING.
 - D. MAXIMUM 4" NOMINAL DIAMETER STEEL CONDUIT OR EMT.
4. MINIMUM 1/2" DEPTH HILTI FS-ONE MAX INTUMESCENT FIRESTOP SEALANT.
5. MINIMUM 1/2" BEAD HILTI FS-ONE MAX INTUMESCENT FIRESTOP SEALANT APPLIED AT POINT OF CONTACT.

NOTES : 1. MAXIMUM DIAMETER OF OPENING [FLOOR ASSEMBLY] = 5".
 2. WHEN CHASE WALL IS INSTALLED, DIAMETER OF OPENING TO BE MAXIMUM 1" LARGER THAN DIAMETER OF PIPE OR SQUARE-CUT WITH A MAXIMUM DIMENSION 1" GREATER THAN THE DIAMETER OF PIPE.
 3. WHEN LUMBER PLATES ARE DISCONTINUOUS, ATTACH A NOMINAL 1-1/2" WIDE 20 GA. (OR HEAVIER) GALVANIZED STEEL PLATE TO EACH END OF LUMBER PLATE. STEEL PLATES SHOULD OVERLAP 2" ONTO LUMBER, AND SECURED WITH STEEL SCREWS OR NAILS.
 4. ANNULAR SPACE = MINIMUM 0", MAXIMUM 7/8".



HILTI, Inc.
Plano, Texas USA (800) 879-8000

Sheet	2 of 2
Scale	-
Date	Mar. 27, 2018

Drawing No.
**FB
1035b**