

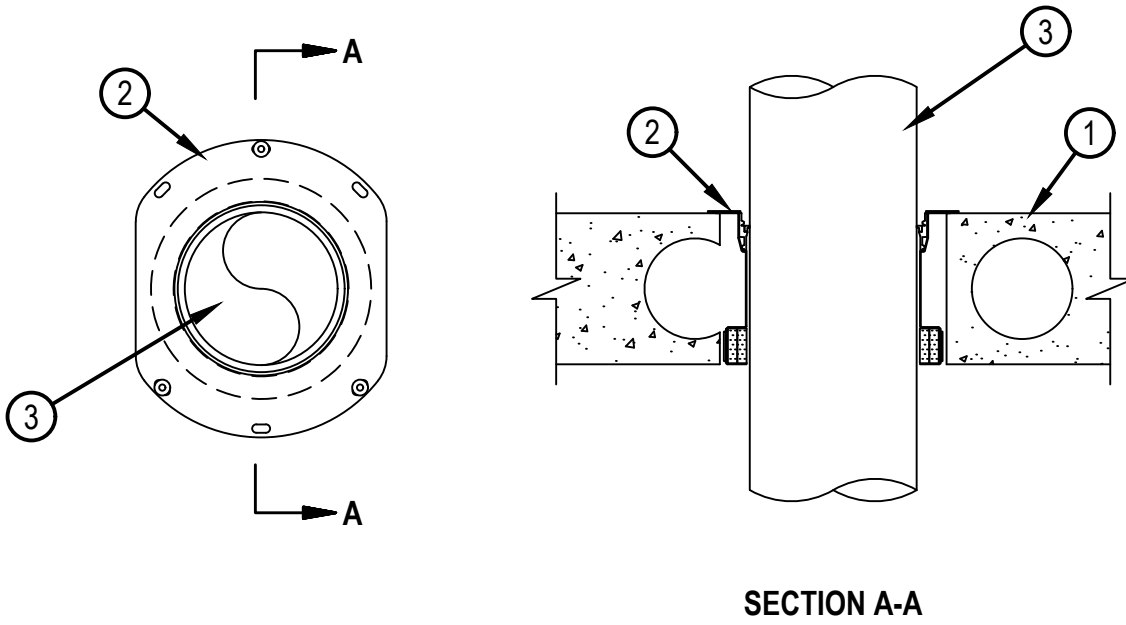


Classified by
Underwriters Laboratories, Inc.
to UL 1479

System No. F-B-2064

F Ratings -- 2 Hr
T Rating -- 1 3/4 Hr

FB 2064



SECTION A-A

1. Floor Assembly — Min 6 in. (152 mm) to max 12-1/2 in. (318 mm) thick UL Classified hollow core Precast Concrete Units*. Max diam of opening is 6 in. (152 mm).

See Precast Concrete Units (CFTV) categories in the Fire Resistance Directory for names of manufacturers.

2. Firestop Device — Drop-in firestop device installed in core-drilled or sleeved opening in concrete floor assembly in accordance with accompanying installation instructions. The firestop device flange should be secured to the top surface of the floor with three 1/4 in. (6 mm) diam by min 1-1/4 in. (32 mm) long steel expansion bolts or screw anchors (installed in a triangular fashion through holes provided). As alternates to the anchors specified above, Hilti 1/4 in. (6 mm) diam by 1-1/4 in. (32 mm) long KWIK-CON II+ concrete screw anchor, Hilti 1/4 in. (6 mm) diam by 1-3/4 in. (45 mm) long KWIK-BOLT 3 steel expansion anchor or Hilti 1/4 in. (6 mm) by 3/4 in. (19 mm) long Metal HIT Anchor may be used. In addition, for nom 2 in. (51 mm), 3 in. and 4 in. (102 mm) firestop devices, four 11/16 in. (18 mm) long Hilti X-GH P18 MX steel fasteners may be installed through the steel flange, two on each side. The firestop devices shall be installed as detailed in the following table:



Reproduced by HILTI, Inc. Courtesy of
Underwriters Laboratories, Inc.
November 13, 2017

System No. F-B-2064

FB 2064

Nom Tube Diam, In. (mm)	Firestop Device	Core Hole Diam, In (mm)	Min-Max Floor Thickness In. (mm)
2 (51) or smaller +	CFS-DID 2"C	4 (102)	6 - 6-1/2 (152 - 185)
3 (76)	CFS-DID 3"C	5 (127)	6 - 6-1/2 (152 - 185)
4 (102)	CFD-DID 4"C	6 (152)	6 - 6-1/2 (152 - 185)
2 (51) or smaller +	CFS-DID 2"HC8	4 (102)	7-1/2 - 8-1/2 (191 - 216)
3 (76)	CFS-DID 3"HC8	5 (127)	7-1/2 - 8-1/2 (191 - 216)
4 (102)	CFS-DID 4"HC8	6 (152)	7-1/2 - 8-1/2 (191 - 216)
2 (51) or smaller +	CFS-DID 2"HC10	4 (102)	9-1/2 - 10-1/2 (241 - 267)
3 (76)	CFS-DID 3"HC10	5 (127)	9-1/2 - 10-1/2 (241 - 267)
4 (102)	CFS-DID 4"HC10	6 (152)	9-1/2 - 10-1/2 (241 - 267)
2 (51) or smaller +	CFS-DID 2"HC12	4 (102)	11-1/2 - 12-1/2 (292 - 318)
3 (76)	CFS-DID 3"HC12	5 (127)	11-1/2 - 12-1/2 (292 - 318)
4 (102)	CFS-DID 4"HC12	6 (152)	11-1/2 - 12-1/2 (292 - 318)

+ For pipe smaller than nom 2 in. (51 mm) diam, Adapter and Top Seal Plug is required to be used.

HILTI CONSTRUCTION CHEMICALS, DIV OF HILTI INC — CFS-DID 2"C, 3"C and 4"C; CFS-DID 2"HC8, 2"HC10 and 2"HC12; CFS-DID 3"HC8, 3"HC10 and 3"HC12; CFS-DID 4"HC8, 4"HC10 and 4"HC12.

3. Through Penetrant — One nonmetallic pipe to be installed within the firestop device. Pipe to be rigidly supported on both sides of floor assembly. The following types of pipe may be used:

A. Cross Linked Polyethylene (PEX) Tubing — Nom 4 in. (102 mm) diam (or smaller) SDR 9 Uponor AquaPEX or Wirsbo hePEX PEX tubing for use in closed (process or supply) piping systems.

* Indicates such products shall bear the UL or cUL Certification Mark for jurisdictions employing the UL or cUL Certification (such as Canada), respectively.



Hilti Firestop Systems

Reproduced by HILTI, Inc. Courtesy of
Underwriters Laboratories, Inc.
November 13, 2017