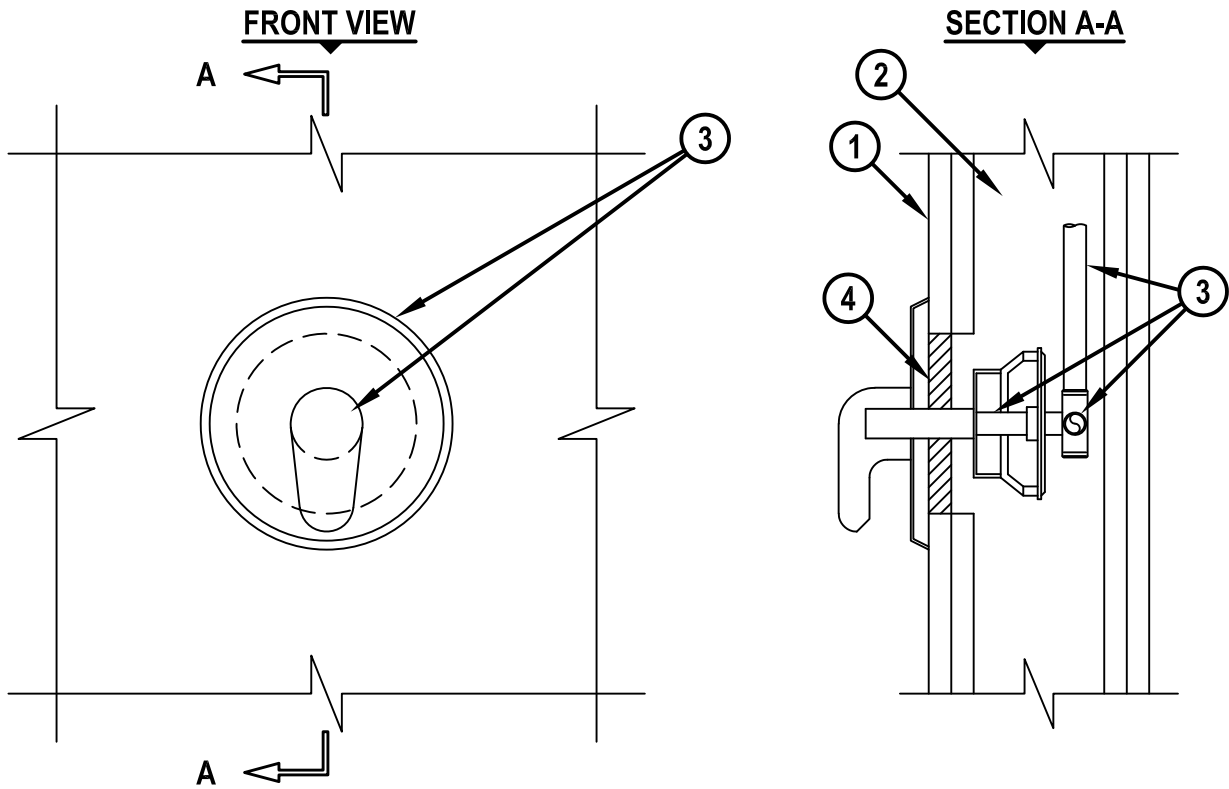


SHOWER VALVE ASSEMBLY THROUGH GYPSUM WALL ASSEMBLY

F-RATING = 1-HR. OR 2-HR.

T-RATING = 1-HR. OR 2-HR.

WL7272b.091818



1. GYPSUM WALL ASSEMBLY (UL/cUL CLASSIFIED U300, U400, V400 OR W400 SERIES) (1-HR. OR 2-HR. FIRE-RATING) (2-HR. SHOWN).
2. [NOT SHOWN] WOOD STUDS TO CONSIST OF NOMINAL 2" x 4" LUMBER (SPACED MAXIMUM 16" O/C). STEEL STUDS TO BE MINIMUM 3-1/2" WIDE (SPACED MAXIMUM 24" O/C).
3. PENETRATING ITEM TO BE A SHOWER VALVE ASSEMBLY CENTERED WITHIN THE OPENING AND CONSISTING OF THE FOLLOWING :
 - A. STAINLESS STEEL OR STEEL HANDLE, BRASS MIXING VALVE, AND MINIMUM 7" DIAMETER ESCUTCHEON PLATE LAPPING A MINIMUM 1" ONTO WALL BEYOND OPENING.
 - B. MAXIMUM 1/2" NOMINAL DIAMETER COPPER OR IRON SUPPLY PIPES OR TUBES CONNECTED TO SHOWER VALVE ASSEMBLY AND RIGIDLY SUPPORTED WITHIN THE WALL CAVITY.
4. MINIMUM 5/8" DEPTH HILTI CFS-S SIL GG FIRESTOP SILICONE SEALANT.

NOTES : 1. MAXIMUM DIAMETER OF OPENING = 5".
2. ANNULAR SPACE BETWEEN OPENING AND PENETRATING VALVE = MAXIMUM 1-7/8".



HILTI, Inc.
 Plano, Texas USA (800) 879-8000

Sheet	1 of 1
Scale	3/16" = 1"
Date	Sep. 18, 2018

Drawing No.
WL
7272b