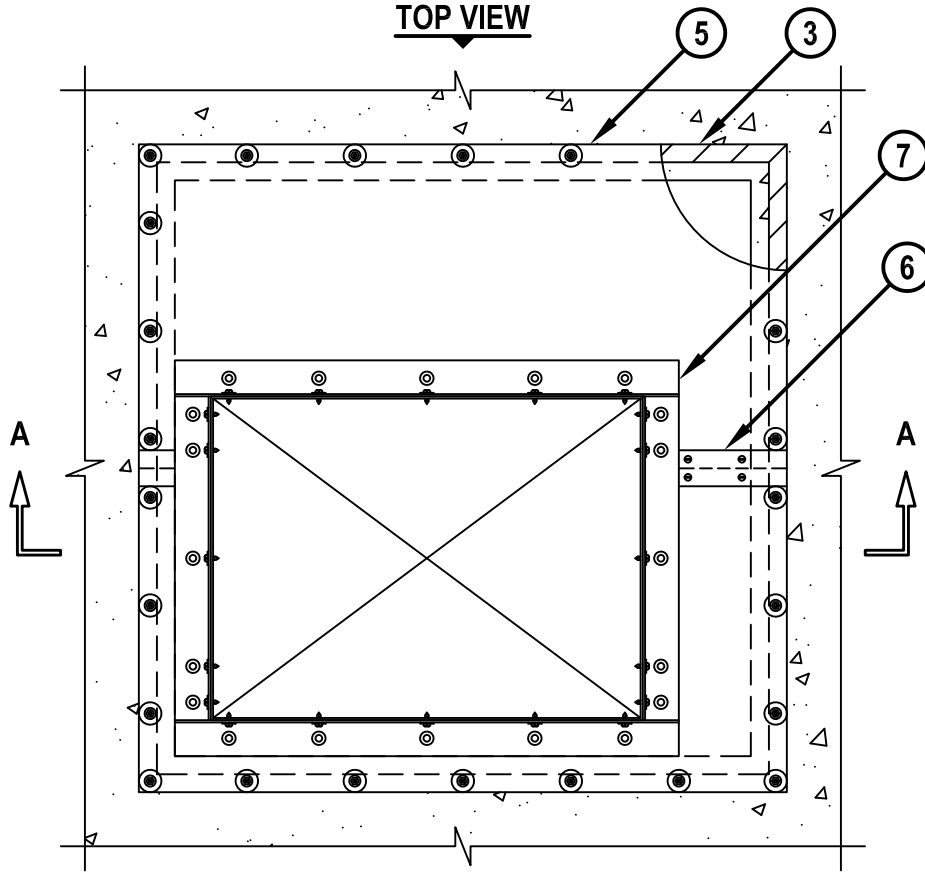


UL/cUL SYSTEM NO. C-AJ-7195

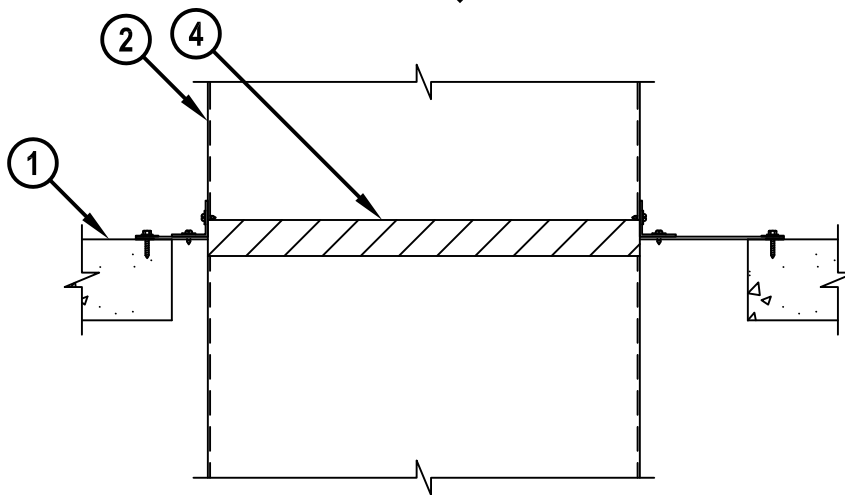
**METAL DUCT (WITHOUT DAMPER) THROUGH CONCRETE FLOOR/WALL OR
CONCRETE BLOCK WALL ASSEMBLY**

F-RATING = 2-HR.
T-RATING = 0-HR.

TOP VIEW



SECTION A-A



CAJ7195a.030518



HILTI, Inc.
Plano, Texas USA (800) 879-8000

Sheet	1 of 2
Scale	3/32" = 1"
Date	Mar. 05, 2018

Drawing No.

**CAJ
7195a**

Saving Lives through Innovation and Education

**METAL DUCT (WITHOUT DAMPER) THROUGH CONCRETE FLOOR/WALL OR
CONCRETE BLOCK WALL ASSEMBLY**

F-RATING = 2-HR.
T-RATING = 0-HR.

CAJ7195a.030518

1. CONCRETE FLOOR OR WALL ASSEMBLY (2-HR. FIRE-RATING) :
 - A. LIGHTWEIGHT OR NORMAL WEIGHT CONCRETE FLOOR OR WALL (MINIMUM 4-1/2" THICK).
 - B. ANY UL/cUL CLASSIFIED CONCRETE BLOCK WALL (MINIMUM 6" THICK).
2. STEEL DUCT TO CONSIST OF ONE OF THE FOLLOWING (NOTE : NOT FOR USE IN DUCT SYSTEMS CONTAINING A DAMPER) :
 - A. MAXIMUM 24" x 18" RECTANGULAR STEEL DUCT (MIN. 24 GA.).
 - B. MAXIMUM 24" x 18" RECTANGULAR STEEL DUCT (MIN. 24 GA.) WITH SW11 COATING MATERIAL (FLAMEBAR BW11 FIRE RATED DUCTWORK BY FIRESPRAY INTERNATIONAL, LTD.).
3. ONE LAYER HILTI CP 619T PUTTY ROLL OR MINIMUM 1/2" BEAD HILTI FS-ONE MAX INTUMESCENT FIRESTOP SEALANT APPLIED UNDER COMPOSITE SHEET AROUND PERIMETER OF OPENING AND OVER BUTTED SEAM OR SLIT MADE IN COMPOSITE SHEET (NOT SHOWN ON SEAM).
4. TWO STACKS OF 1" THICK HILTI CP 619T FIRESTOP PUTTY ROLL PRESSED TIGHTLY AROUND CONTOUR OF DUCT AND POSITIONED TO EXTEND 2" BELOW AND 1" ABOVE CFS-COS COMPOSITE SHEET (SEE NOTE NO. 3 BELOW).
5. HILTI CFS-COS FIRESTOP COMPOSITE SHEET CUT TO OVERLAP FLOOR OR WALL A MINIMUM OF 2". COMPOSITE SHEET INSTALLED WITH THE ALUMINUM FOIL FACING AGAINST THE FLOOR OR WALL AND SECURED WITH MINIMUM 3/16" DIAMETER BY 1-1/4" LONG STEEL ANCHOR SCREWS WITH 1-1/4" DIAMETER STEEL FENDER WASHERS AT MAXIMUM 2" FROM ENDS AND MAXIMUM 6" C/C. COMPOSITE SHEET CUT TO TIGHTLY FOLLOW THE CONTOUR OF THE DUCT.
6. MINIMUM 2" WIDE STAINLESS STEEL STRIP (MIN. 24 GA.) CENTERED OVER ENTIRE LENGTH OF BUTT SEAM OR SLIT MADE IN COMPOSITE SHEET. COVER STRIP SECURED TO COMPOSITE SHEET WITH STEEL SHEET METAL SCREWS OR STEEL RIVETS SPACED MAXIMUM 3" C/C ON EACH SIDE OF SEAM OR SLIT.
7. AFTER INSTALLATION OF COMPOSITE SHEET, FASTEN STEEL ANGLE (L2 x 2 x MIN. 20 GA.) TO DUCT AND TO COMPOSITE SHEET WITH NO. 10 (OR LARGER) SHEET METAL SCREWS ON ALL FOUR SIDES OF DUCT (SPACED A MAX. 6" OC.).

NOTES : 1. MAXIMUM AREA OF OPENING = 1024 SQ. IN. WITH A MAXIMUM DIMENSION OF 32".
 2. ANNULAR SPACE = MINIMUM 2".
 3. AS AN ALTERNATE TO HILTI CP 619T FIRESTOP PUTTY ROLL (ITEM 4 ABOVE) INSTALL A MINIMUM 1/2" BEAD OF HILTI FS-ONE MAX INTUMESCENT FIRESTOP SEALANT AROUND CONTOUR OF THE DUCT ABOVE HILTI CFS-COS FIRESTOP COMPOSITE SHEET. HILTI FS-ONE MAX INTUMESCENT FIRESTOP SEALANT INSTALLED PRIOR TO INSTALLATION OF STEEL ANGLES.
 4. HILTI CFS-COS FIRESTOP COMPOSITE SHEET, HILTI CP 619T FIRESTOP PUTTY ROLL (OR HILTI FS-ONE MAX INTUMESCENT FIRESTOP SEALANT), AND STEEL ANGLES ARE REQUIRED ON BOTH SIDES OF A WALL.



HILTI, Inc.
Plano, Texas USA (800) 879-8000

Sheet	2 of 2
Scale	-
Date	Mar. 05, 2018

Drawing No.
**CAJ
7195a**