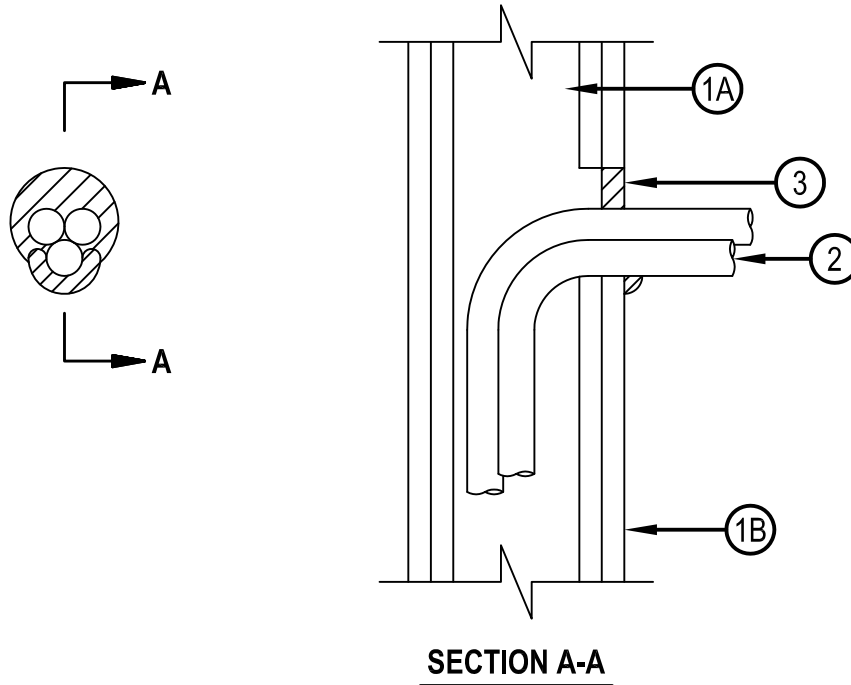




Classified by  
Underwriters Laboratories, Inc.  
to UL 1479 and CAN/ULC-S115

**System No. W-L-3310**  
**F Rating - 1 and 2 Hr (See Item 1)**  
**T Rating - 0 Hr**

WL 3310



1. Wall Assembly — The 1 or 2 hr fire-rated gypsum board/stud wall assembly shall be constructed of the materials and in the manner specified in the individual U300, U400 or V400 Series Wall and Partition Designs in the UL Fire Resistance Directory and shall include the following construction features:
  - A. Studs — Wall framing may consist of either wood studs or steel channel studs. Wood studs to consist of nom 2 by 4 in. (51 by 102 mm) lumber spaced 16 in. (406 mm) OC. Steel studs to be min 3-1/2 in. (89 mm) wide and spaced max 24 in. (610 mm) OC.
  - B. Gypsum Board\* — One or two layers of nom 5/8 in. (16 mm) thick gypsum board as specified in the individual Wall and Partition Design. Max diam of opening is 3 in. (76 mm).

The hourly F Rating of the firestop system is equal to the hourly fire rating of the wall assembly.
2. Cables — Max of three tightly bundled 3/C (with ground) No. 8 AWG bare copper ground metal clad cables with a PVC jacket. Annular space between cable bundle and periphery of opening shall be a min 0 in. (point contact) to a max 1 in. (25 mm). When FS-One sealant is used, max annular space is 1-1/2 in. (38 mm). Cables to be rigidly supported within 24 in. (610 mm) of wall assembly.
3. Fill, Void or Cavity Material\* — Sealant — Min 5/8 in. (16 mm) thickness of fill material applied within annulus, flush with surface of wall. Min 1/2 in. (13 mm) diam bead of sealant applied at point contact location.  
HILTI CONSTRUCTION CHEMICALS, DIV OF HILTI INC — FS-ONE Sealant, FS-ONE MAX Intumescent Sealant or CP 606 Sealant

\* Indicates such products shall bear the UL or cUL Certification Mark for jurisdictions employing the UL or cUL Certification (such as Canada), respectively.



**Hilti Firestop Systems**

Reproduced by HILTI, Inc. Courtesy of  
Underwriters Laboratories, Inc.  
February 09, 2015