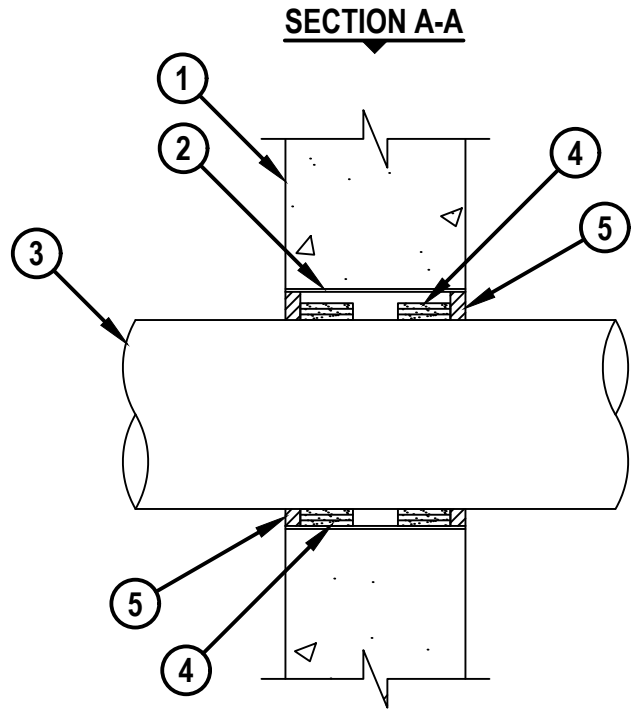
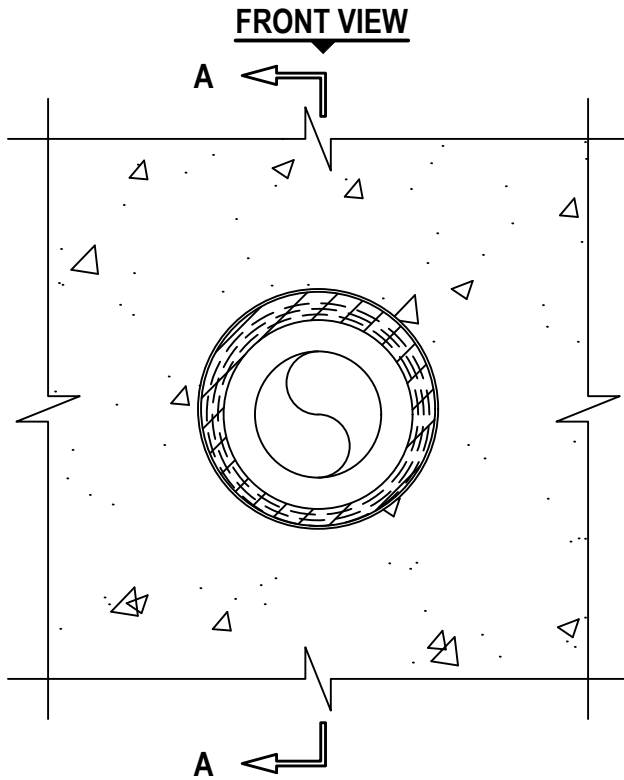


PLASTIC PIPE THROUGH CONCRETE WALL ASSEMBLY

F-RATING = 2-HR.
T-RATING = 2-HR.

WJ2336a.041718



1. CONCRETE WALL ASSEMBLY (2-HR. FIRE-RATING) :
 - A. LIGHTWEIGHT OR NORMAL WEIGHT CONCRETE WALL (MINIMUM 6" THICK).
 - B. ANY UL/cUL CLASSIFIED CONCRETE BLOCK WALL.
2. SHEET METAL SLEEVE (MIN. 28 GA.) WITH 1-1/2" OVERLAP ALONG LONGITUDINAL SEAM. SLEEVE TO BE FLUSH WITH EACH SURFACE OF WALL.
3. MAXIMUM 6" NOMINAL DIAMETER AQUATHERM GREENPIPE PP-R PLASTIC PIPE (SDR 7.4) (CLOSED PIPING SYSTEM ONLY).
4. HILTI CP 648E WRAP STRIP (NOMINAL 3/16" THICK x 1-3/4" WIDE) CONTINUOUSLY WRAPPED AROUND THE OUTER CIRCUMFERENCE OF THE PIPE, AS SPECIFIED IN THE TABLE BELOW, WITH ENDS BUTTED AND HELD IN PLACE WITH TAPE. WRAP STRIP TO BE RECESSED 1/2" FROM EACH SURFACE OF THE WALL TO ACCOMMODATE FIRESTOP SEALANT.
5. MINIMUM 1/2" DEPTH HILTI FS-ONE MAX INTUMESCENT FIRESTOP SEALANT.

MAX PIPE SIZE	MAXIMUM DIAMETER OF OPENING	ANNULAR SPACE		NUMBER OF LAYERS
		MINIMUM	MAXIMUM	
3"	4-1/2"	3/16"	5/8"	1
4"	6"	3/8"	3/4"	2
6"	8"	9/16"	1"	3



HILTI, Inc.
Plano, Texas USA (800) 879-8000

Sheet 1 of 1
Scale 5/32" = 1"
Date Apr. 17, 2018

Drawing No.
WJ 2336a