

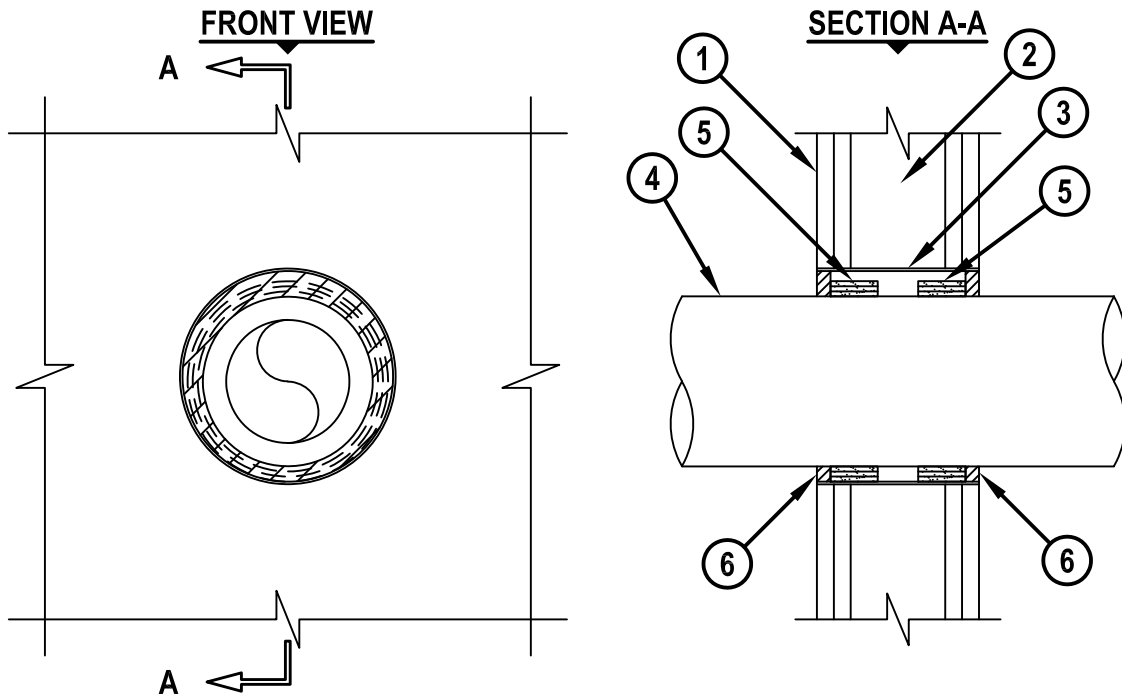
UL SYSTEM NO. W-L-2683

PLASTIC PIPE THROUGH GYPSUM WALL ASSEMBLY

F-RATING = 1-HR. OR 2-HR.

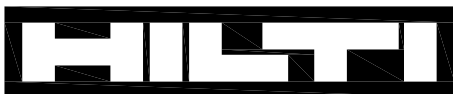
T-RATING = 1-HR. OR 2-HR.

WL2683a.040518



1. GYPSUM WALL ASSEMBLY (UL CLASSIFIED U300, U400, V400, OR W400 SERIES) (1-HR. OR 2-HR. FIRE-RATING) (2-HR. SHOWN).
2. [NOT SHOWN] WOOD STUDS TO CONSIST OF NOMINAL 2" x 4" LUMBER. STEEL STUDS TO BE MINIMUM 3-1/2" WIDE.
3. SHEET METAL SLEEVE (MIN. 28 GA.) WITH 1-1/2" OVERLAP ALONG LONGITUDINAL SEAM. SLEEVE TO BE FLUSH WITH EACH SURFACE OF WALL.
4. MAXIMUM 6" NOMINAL DIAMETER AQUATHERM GREENPIPE PP-R PLASTIC PIPE (SDR 7.4) (CLOSED PIPING SYSTEM ONLY).
5. HILTI CP 648E WRAP STRIP (NOMINAL 3/16" THICK x 1-3/4" WIDE) CONTINUOUSLY WRAPPED AROUND THE OUTER CIRCUMFERENCE OF THE PIPE, AS SPECIFIED IN THE TABLE BELOW, WITH ENDS BUTTED AND HELD IN PLACE WITH TAPE. WRAP STRIP TO BE RECESSED 1/2" FROM EACH SURFACE OF THE WALL TO ACCOMMODATE FIRESTOP SEALANT.
6. MINIMUM 1/2" DEPTH HILTI FS-ONE MAX INTUMESCENT FIRESTOP SEALANT.

MAX PIPE SIZE	MAXIMUM DIAMETER OF OPENING	ANNULAR SPACE		NUMBER OF LAYERS
		MINIMUM	MAXIMUM	
3"	4-1/2"	3/16"	5/8"	1
4"	6"	3/8"	3/4"	2
6"	8"	9/16"	1"	3



Hilti Firestop Systems

HILTI, Inc.
Plano, Texas USA (800) 879-8000

Sheet 1 of 1
Scale 9/64" = 1"
Date Apr. 05, 2018

Drawing No.

**WL
2683a**

Saving Lives through Innovation and Education