

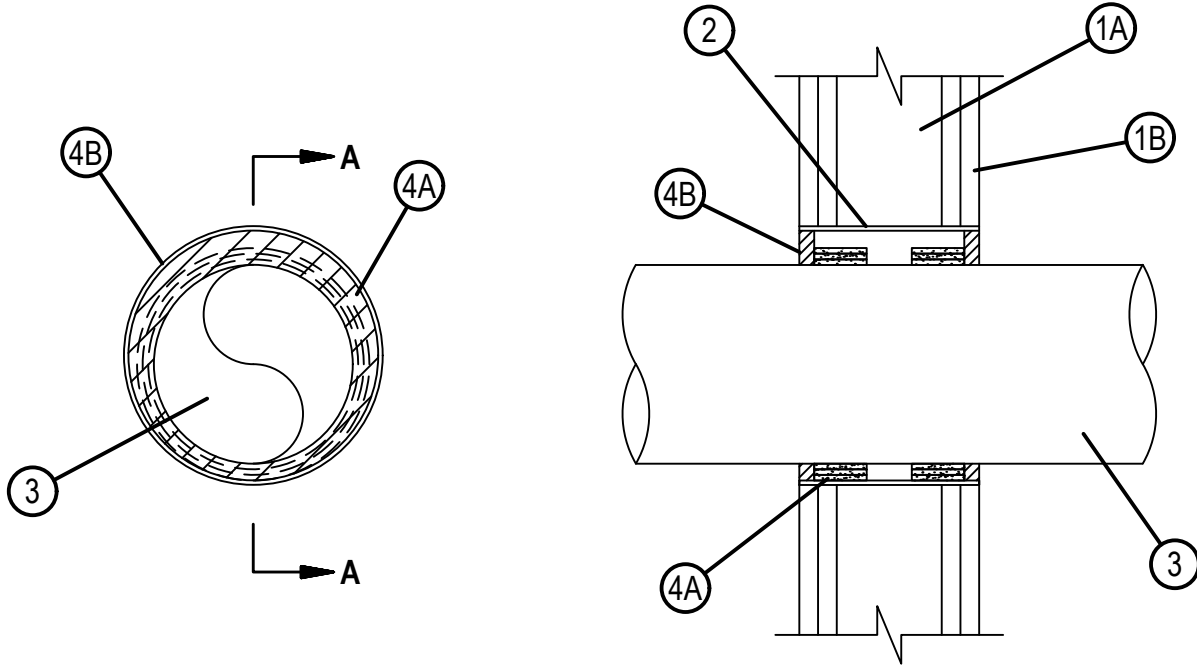


Underwriters Laboratories, Inc.
to UL 1479

System No. W-L-2683

F Ratings — 1 and 2 Hr (See Item 1)
T Rating — 1 and 2 Hr (See Item 1)

WL 2683



SECTION A-A



Hilti Firestop Systems

Reproduced by HILTI, Inc. Courtesy of
Underwriters Laboratories, Inc.
March 27, 2018

System No. W-L-2683

WL 2683

The hourly F and T Ratings of the firestop system are equal to the hourly fire rating of the wall assembly in which it is installed.

1. Wall Assembly — The 1 or 2 hr fire-rated gypsum board/stud wall assembly shall be constructed of the materials and in the manner specified in the individual U300, U400, V400 or W400 Series Wall and Partition Designs in the UL Fire Resistance Directory and shall include the following construction features:
 - A. Studs — Wall framing may consist of either wood studs or steel channel studs. Wood studs to consist of nom 2 by 4 in. (51 by 102 mm) lumber spaced 16 in. (406 mm) OC. Steel studs to be min 3-1/2 in. (89 mm) wide and spaced max 24 in. (610 mm) OC.
 - B. Gypsum Board* — One or two layers of nom 5/8 in. (16 mm) thick gypsum board, as specified in the individual Wall and Partition Design. Maximum diam of opening is 8 in. (203 mm).
2. Steel Sleeve — Cylindrical sleeve fabricated from min 0.016 in. (0.41 mm) thick galv sheet steel (28 gauge or heavier) and having a min 1-1/2 in. (38 mm) lap along the longitudinal seam. Sleeve installed by coiling the sheet steel to a diam smaller than the through opening, inserting the coil through the opening and releasing the coil. The ends of the steel sleeve shall be flush with each surface of the wall.
3. Through Penetrants — One nonmetallic pipe to be installed concentrically or eccentrically within the firestop system. The annular space between penetrant and sleeve shall be as specified in Table below (see Item 4A). Pipe to be rigidly supported on both sides of wall assembly. The following types and sizes of nonmetallic pipes may be used:
 - A. Polypropylene Random (PP-R) Pipe — Nom 6 in. (160 mm OD) diam (or smaller) Aquatherm Greenpipe PP-R SDR 7.4 pipe for use in closed (process or supply) piping systems.
4. Firestop System — The firestop system shall consist of the following:
 - A. Fill, Void or Cavity Material* — Wrap Strip — Nom 3/16 in. (4.8 mm) thick by 1-3/4 in. (44 mm) wide intumescent wrap strip. Layers of wrap strip are continuously wrapped around the pipe with ends tightly butted and held in place with tape. Wrap strip installed within the opening at each side of wall and recessed from both surfaces of wall to accommodate the required thickness of sealant (Item 4B). The number of layers for a given size penetrant is shown in table below:
 HILTI CONSTRUCTION CHEMICALS, DIV OF HILTI INC — CP648-E W45/1-3/4" Firestop Wrap Strip

Max Pipe Size, in. (mm)	Max Opening Dima, in. (mm)	Annular Space Min, in. (mm)	Annular Space Max, in. (mm)	Number of Layers
3 (90)	4-1/2 (114)	3/16 (4.8)	5/8 (16)	1
4 (125)	6 (152)	3/8 (10)	3/4 (19)	2
6 (160)	8 (203)	9/16 (14)	1 (25)	3

Note: Metric dimensions shown for pipes in parenthesis are actual metric OD's marked on pipe.

- B. Fill, Void or Cavity Material* — Sealant — Min 1/2 in. (13 mm) thickness of fill material applied within the annulus, flush with both surfaces of wall.
 HILTI CONSTRUCTION CHEMICALS, DIV OF HILTI INC — FS-ONE MAX Intumescent Sealant

*Indicates such products shall bear the UL or cUL Certification Mark for jurisdictions employing the UL or cUL Certification (such as Canada), respectively.



Reproduced by HILTI, Inc. Courtesy of
Underwriters Laboratories, Inc.
March 27, 2018