

UL SYSTEM NO. W-L-5335

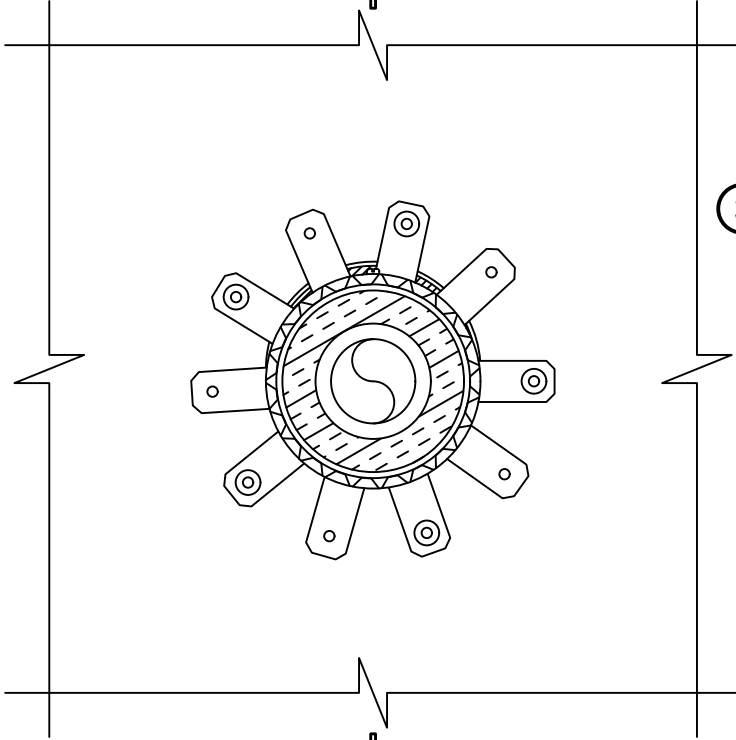
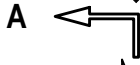
INSULATED PLASTIC PIPE THROUGH GYPSUM WALL ASSEMBLY

F-RATING = 2-HR.

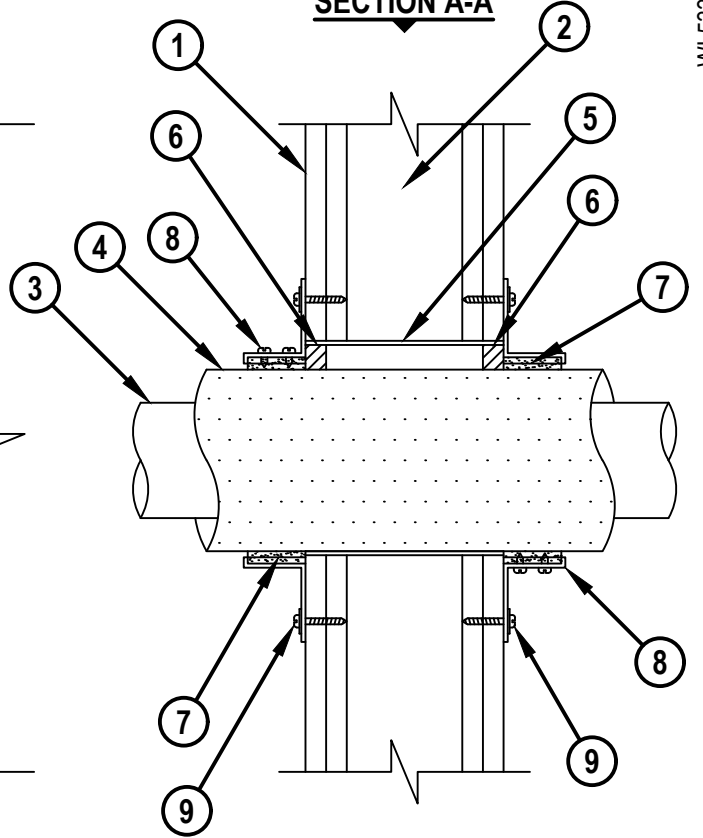
T RATINGS = 1-1/2-HR. OR 2-HR. (SEE NOTE NO. 3 BELOW)

WL5335a.041818

FRONT VIEW



SECTION A-A



HILTI, Inc.
Plano, Texas USA (800) 879-8000

Sheet	1 of 2
Scale	1 1/64" = 1"
Date	Apr. 20, 2018

Drawing No.
WL
5335a

Saving Lives through Innovation and Education

UL SYSTEM NO. W-L-5335

INSULATED PLASTIC PIPE THROUGH GYPSUM WALL ASSEMBLY

F-RATING = 2-HR.

T RATINGS = 1-1/2-HR. OR 2-HR. (SEE NOTE NO. 3 BELOW)

WL5335a.041818

1. GYPSUM WALL ASSEMBLY (UL CLASSIFIED U300, U400, V400, OR W400 SERIES) (2-HR. FIRE-RATING).
2. [NOT SHOWN] WOOD STUDS TO CONSIST OF NOMINAL 2" x 4" LUMBER (SPACED MAXIMUM 16" OC). STEEL STUDS TO BE MINIMUM 3-1/2" WIDE (SPACED MAXIMUM 24" OC).
3. MAXIMUM 3" NOMINAL DIAMETER COSMOPLAST PP-R PLASTIC PIPE (SDR 6) (CLOSED PIPING SYSTEM ONLY).
4. PIPE INSULATION SHALL CONSIST OF ONE OF THE FOLLOWING :
 - A. NOMINAL 1" THICK AB/PVC PIPE INSULATION.
 - B. NOMINAL 1" THICK POLYOLEFIN PIPE INSULATION.
5. [OPTIONAL] MAXIMUM 6-1/2" DIAMETER STEEL SLEEVE (MIN. 28 GA. SHEET METAL) HAVING A MINIMUM 1" OVERLAP ALONG THE LONGITUDINAL SEAM.
6. MINIMUM 5/8" DEPTH HILTI FS-ONE MAX INTUMESCENT FIRESTOP SEALANT.
7. HILTI CP 648E WRAP STRIP (NOMINAL 3/16" THICK x 1-3/4" WIDE) CONTINUOUSLY WRAPPED AROUND THE OUTER CIRCUMFERENCE OF THE PIPE, COVERING TWO TIMES, WITH ENDS BUTTED AND HELD IN PLACE WITH TAPE.
8. HILTI 1-3/4" RETAINING COLLAR WRAPPED OVER WRAP STRIPS, OVERLAPPING MINIMUM 1" AND SECURED WITH TWO NO. 8 SHEET METAL SCREWS AT OVERLAP LOCATION.
9. EVERY OTHER TAB OF RETAINING COLLAR SECURED TO WALL WITH 1-1/4" LONG STEEL LAMINATE SCREWS IN CONJUNCTION WITH 1-1/4" DIAMETER FENDER WASHERS OR WITH 3/16" TOGGLER BOLTS AND WASHERS.

<p>NOTES : 1. MAXIMUM DIAMETER OF OPENING = 6-1/2". 2. ANNULAR SPACE = MINIMUM 0", MAXIMUM 1". 3. T-RATING = 1 1/2-HR. WHEN AB/PVC PIPE INSULATION IS USED. T-RATING = 2-HR. WHEN POLYOLEFIN PIPE INSULATION IS USED.</p>



HILTI, Inc.
Plano, Texas USA (800) 879-8000

Sheet	2 of 2
Scale	-
Date	Apr. 20, 2018

Drawing No.
WL
5335a