

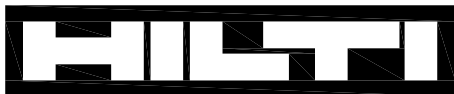
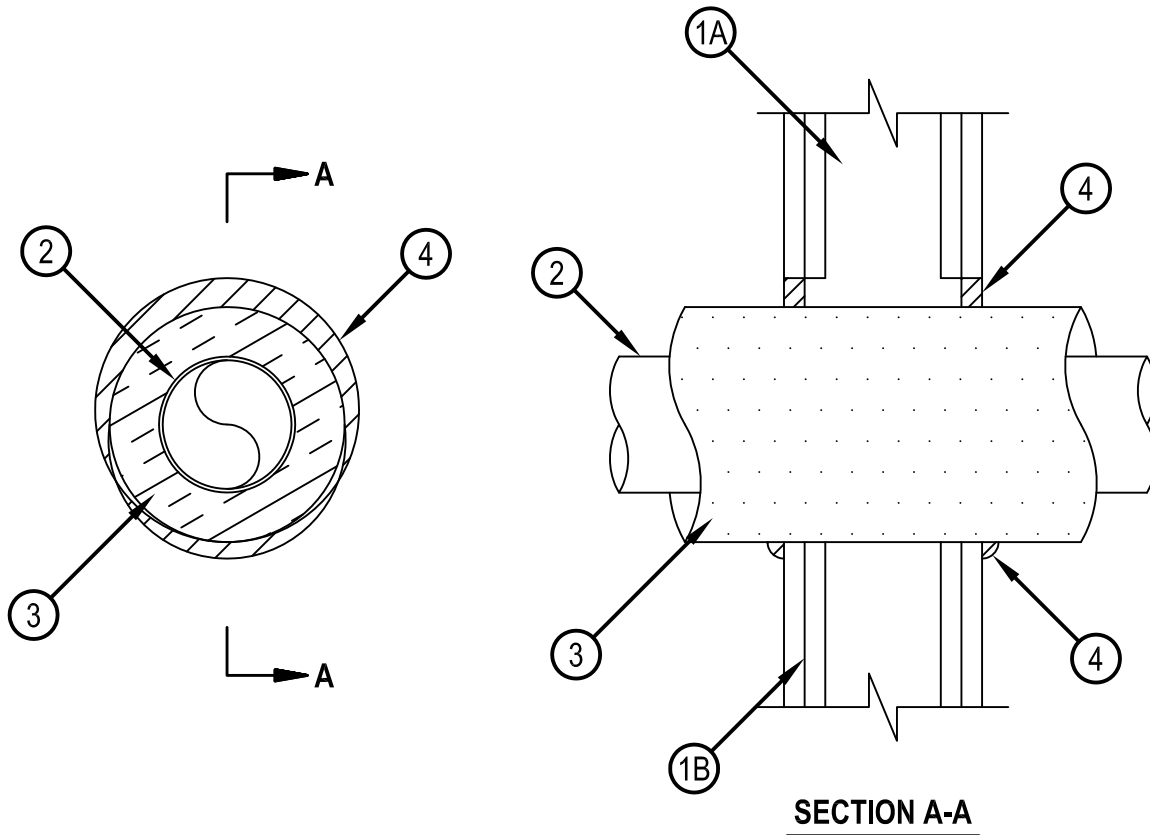


Classified by
Underwriters Laboratories, Inc.
to UL 1479 and CAN/ULC-S115

System No. W-L-5257

WL 5257

ANSI/UL1479 (ASTM E814)	CAN/ULC S115
F Ratings — 1 and 2 Hr (See Item 1)	F Ratings — 1 and 2 Hr (See Item 1)
T Ratings — 0 and 1 Hr (See Items 1 and 3)	FT Ratings — 0 and 1 Hr (See Items 1 and 3)
L Rating At Ambient — 4 CFM/sq 4 ft (See Item)	FH Ratings — 1 and 2 Hr (See Item 1)
L Rating At 400 F — Less Than 1 CFM/sq ft (See Item)	FTH Ratings — 0 and 1 Hr (See Items 1 and 3)
	L Rating At Ambient — 4 CFM/sq ft (See Item)
	L Rating At 400 F — Less Than 1 CFM/sq ft (See Item)



Hilti Firestop Systems

Reproduced by HILTI, Inc. Courtesy of
Underwriters Laboratories, Inc.
January 26, 2015

System No. W-L-5257

WL 5257

1. Wall Assembly — The 1 or 2 hr fire rated gypsum board/stud wall assembly shall be constructed of the materials and in the manner specified in the individual U300, U400, V400 or W400 Series Wall and Partition Design in the UL Fire Resistance Directory and shall include the following construction features:
 - A. Studs — Wall framing may consist of either wood studs or steel channel studs. Wood studs to consist of nom 2 by 4 in. (51 by 102 mm) lumber spaced 16 in. (406 mm) OC. Steel studs to be min 3-1/2 in. (89 mm) wide and spaced max 24 in. (610 mm) OC.
 - B. Gypsum Board* — 5/8 in. (16 mm) thick, 4 ft (122 cm) wide, with square or tapered edges. Thickness, type, number of layers and fasteners as specified in the individual Wall and Partition Design. Max diam of opening is 8 in. (203 mm).

The hourly F and FH Ratings of the firestop system are equal to the hourly fire rating of the wall assembly in which it is installed. The hourly T, FT and FTH Ratings of the firestop system are 1 hr for 2 hr fire rated walls and 0 hr for 1 hr fire rated walls.
2. Through Penetrant — One metallic pipe or tube to be installed eccentrically or concentrically within the firestop system. Pipe or tube to be rigidly supported on both sides of the wall assembly. The following types and sizes of metallic pipes and tubes may be used:
 - A. Steel Pipe — Nom 4 in. (102 mm) diam (or smaller) Schedule 5 (or heavier) steel pipe.
 - B. Iron Pipe — Nom 4 in. (102 mm) diam (or smaller) cast or ductile iron pipe.
 - C. Copper Pipe — Nom 4 in. (102 mm) diam (or smaller) Regular (or heavier) copper pipe.
 - D. Copper Tube — Nom 4 in. (102 mm) diam (or smaller) Type L (or heavier) copper tube.
3. Pipe Covering* — Min 1 in. (25 mm) to max 1-1/2 in. (38 mm) thick hollow cylindrical heavy density (3.5 pcf or 24 kg/m³) glass fiber units jacketed on the outside with an all service jacket. Longitudinal joints sealed with metal fasteners or factory-applied self-sealing lap tape. Transverse joints secured with metal fasteners or with butt tape supplied with the product. The annular space between the insulated pipe and the periphery of the opening shall be min 0 in. (point contact) to max 7/8 in. (22 mm). When pipe covering material thickness is less than 1-1/2 in. (38 mm), the T, FT and FTH Ratings are 0 Hr.

See Pipe Equipment Covering — Materials— (BRGU) Category in the Building Materials Directory for names of manufacturers. Any pipe covering material meeting the above specifications and bearing the UL Classification Marking with a Flame Spread Index of 25 or less and a Smoke Developed Index of 50 or less may be used.
4. Fill, Void or Cavity Material* — Sealant — Min 5/8 in. (16 mm) thickness of fill material applied within annulus, flush with both surfaces of wall assembly. At point contact location, min 1/2 in. (13 mm) diam bead of fill material applied at insulated metallic pipe/wall interface on both surfaces of wall. L Ratings apply only when FS-One Sealant is used.

HILTI CONSTRUCTION CHEMICALS, DIV OF HILTI INC — FS-One Sealant, FS-ONE MAX Intumescent Sealant, CFS-S-SIL GG Sealant, CP 606 Sealant or CP 601S Sealant

* Indicates such products shall bear the UL or cUL Certification Mark for jurisdictions employing the UL or cUL Certification (such as Canada), respectively.



Hilti Firestop Systems

Reproduced by HILTI, Inc. Courtesy of
Underwriters Laboratories, Inc.
January 26, 2015

Page: 2 of 2