

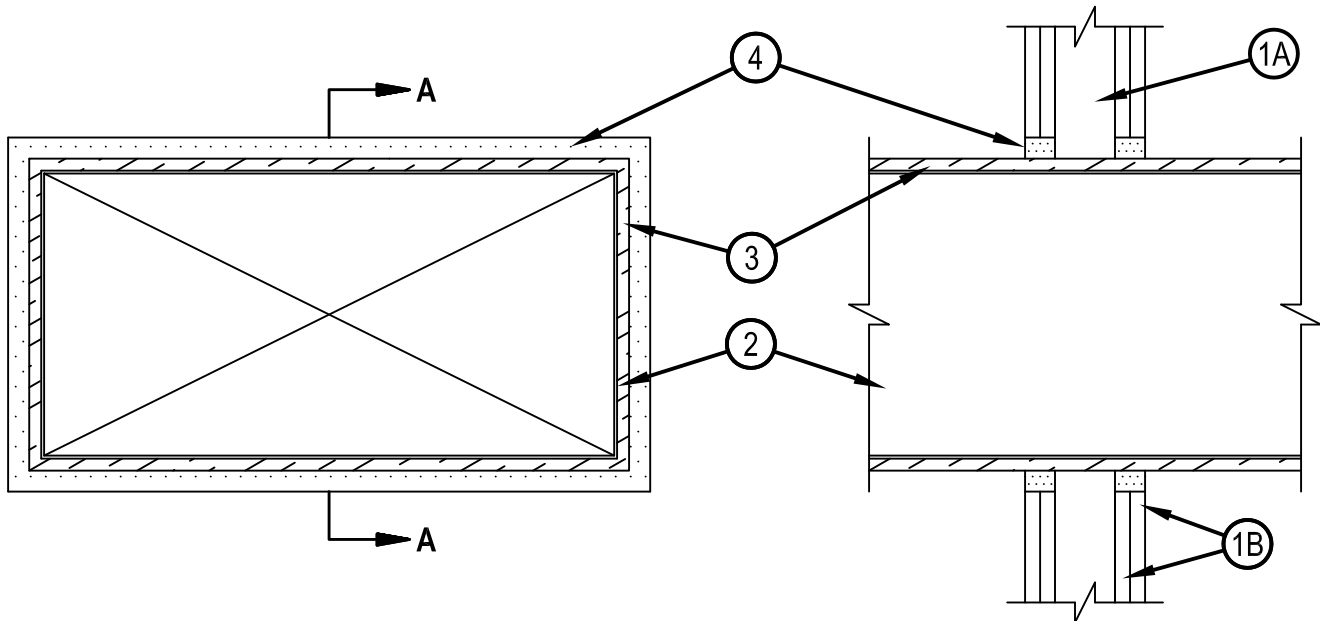


Classified by
Underwriters Laboratories, Inc.
to UL 1479 and CAN/ULC-S115

System No. W-L-7059

WL 7059

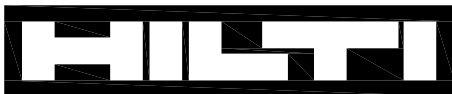
ANSI/UL1479 (ASTM E814)	CAN/ULC S115
F Ratings - 1 and 2 Hr (See Item 1)	F Ratings - 1 and 2 Hr (See Item 1)
T Rating - 1/2 and 3/4 Hr (See Item 1)	FT Rating - 1/2 and 3/4 Hr(See Item 1)
	FH Ratings - 1 and 2 Hr (See Item 1)
	FTH Rating - 1/2 and 3/4 Hr (See Item 1)



SECTION A-A

1. Wall Assembly — The 1 or 2 hr fire-rated gypsum wallboard/stud wall assembly shall be constructed of the materials and in the manner described in the individual U400, V400 or W400 Series Wall or Partition Design in the UL Fire Resistance Directory and shall include the following construction features:

- A. Studs — Wall framing shall consist of channel studs. Steel studs to be min 2-1/2 in. (64 mm) wide and spaced max 24 in. (610 mm) OC. The opening in the wall to accommodate the steel duct (Item 2) shall be framed on all sides using lengths of studs installed between the vertical studs and attached to the studs at each end. The framed opening in the wall shall be a nom 6 in. (152 mm) wide and 12 in. (305 mm) higher than the width and height of the steel duct.
- B. Wallboard, Gypsum* — 5/8 in. (16 mm) thick, 4 ft (1.22 m) wide with square or tapered edges. The gypsum wallboard type, thickness, number of layers, fastener type and sheet orientation shall be as specified in the individual U300, U400, V400 or W400 Series Design in the UL Fire Resistance Directory. Max area of opening is 395 sq. in. (0.25 m²) with max dimensions of 26-3/4 in. (679 mm) for steel studs. The hourly F and FH Ratings of the firestop system are equal to the hourly fire rating of the wall assembly in which it is installed. The hourly T, FT and FTH Ratings are 1/2 hr and 3/4 hr for 1 and 2 hr rated assemblies, respectively



Hilti Firestop Systems

Reproduced by HILTI, Inc. Courtesy of
Underwriters Laboratories, Inc.
January 27, 2015

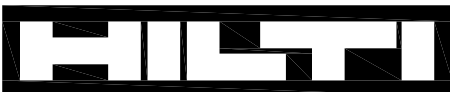
System No. W-L-7059

WL 7059

2. Steel Duct — Nom 24 in. by 12 in. (610 by 305 mm) (or smaller) No. 24 gauge (or heavier) steel duct to be installed eccentrically within the framed opening. The annular space shall be min 1 in. (25 mm) to max 1-3/4 in. (45 mm) Steel duct to be rigidly supported on both sides of wall assembly.
3. Batts and Blankets* — Max 1-1/2 in. (38 mm) thick glass fiber batt or blanket (min 3/4 pcf or 12 kg/m³) jacketed on the outside with a foil-scrim-kraft facing. Longitudinal and transverse joints sealed with aluminum foil tape. During the installation of the fill material, the batt or blanket shall be compressed 50% such that the annular space within the firestop system shall be min 1/4 in. (6 mm) to max 1 in. (25 mm). See Batts and Blankets - (BKNV) category in the Building Materials Directory for names of manufacturers. Any batt or blanket meeting the above specifications and bearing the UL Classification Marking with a Flame Spread Index of 25 or less and a Smoke Developed Index 50 or less may be used.
4. Fill, Void or Cavity Material* - Sealant — Min 5/8 in. or 1-1/4 in. (16 or 32 mm) thickness of fill material applied within annulus, flush with both surfaces of wall for 1 or 2 hr walls, respectively. If voids develop after the fill materials cures, the voids shall be sealed with additional fill material.

HILTI CONSTRUCTION CHEMICALS, DIV OF HILTI INC — FS-ONE Sealant or FS-ONE MAX Intumescent Sealant

* Indicates such products shall bear the UL or cUL Certification Mark for jurisdictions employing the UL or cUL Certification (such as Canada), respectively.



Hilti Firestop Systems

Reproduced by HILTI, Inc. Courtesy of
Underwriters Laboratories, Inc.
January 27, 2015