

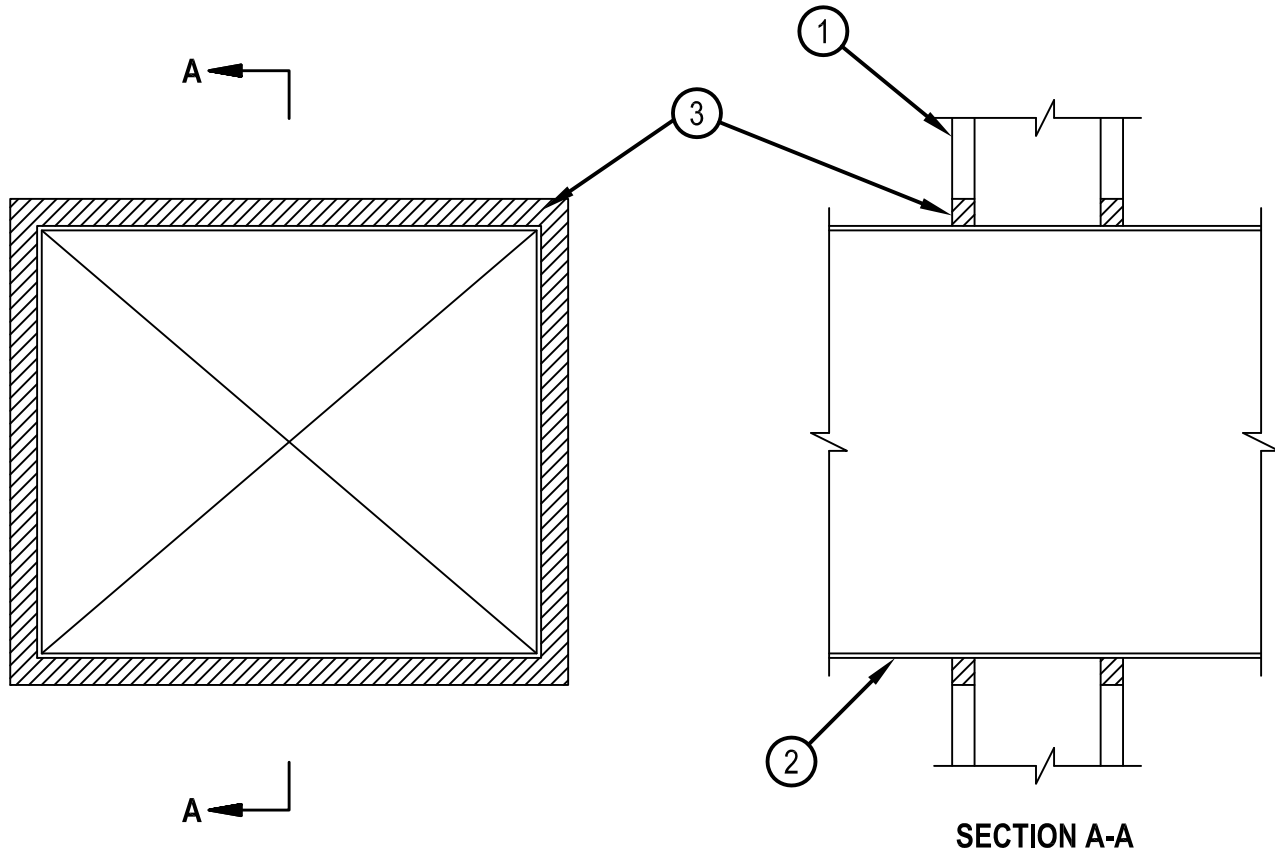


Classified by
Underwriters Laboratories, Inc.
to UL 1479 and CAN/ULC-S115

System No. W-L-7096

WL 7096

ANSI/UL1479 (ASTM E814)	CAN/ULC S115
F Rating — 1 Hr	F Rating — 1 Hr
T Rating — 0 Hr	FT Rating — 0 Hr
	FH Rating — 1 Hr
	FTH Rating — 0 Hr



SECTION A-A

1. Wall Assembly — The 1 hr fire-rated gypsum board/stud wall assembly shall be constructed of the materials and in the manner described in the individual U400, V400 or W400 Series Wall or Partition Design in the UL Fire Resistance Directory and shall include the following construction features:

A. Studs — Wall framing to consist of min 3-1/2 in. (89 mm) wide steel channel studs, fabricated from 25 MSG galv steel, spaced max 24 in. (610 mm) OC.

B. Gypsum Board* — One layer of nom 5/8 in. (16 mm) thick gypsum board, as specified in the individual Wall and Partition Design. Max area of opening is 202 sq in. (0.130 m²) with max dimension of 15-1/4 in. (387 mm).

2. Steel Duct — Nom 12 in by 14 in. (305 by 356 mm) (or smaller) No. 24 gauge (or heavier) galv steel duct to be installed either concentrically or eccentrically within the firestop system. The annular space shall be min 1/4 in. (6 mm) to max 1 in. (25 mm). Duct to be rigidly supported on both sides of the wall assembly.

3. Fill, Void or Cavity Material - Sealant* — Min 5/8 in. (16 mm) thickness of fill material applied within annular space, flush with both surfaces of wall.

HILTI CONSTRUCTION CHEMICALS, DIV OF HILTI INC — FS-ONE Sealant or FS-ONE MAX Intumescent Sealant

* Indicates such products shall bear the UL or cUL Certification Mark for jurisdictions employing the UL or cUL Certification (such as Canada), respectively.



Hilti Firestop Systems

Reproduced by HILTI, Inc. Courtesy of
Underwriters Laboratories, Inc.

January 27, 2015