



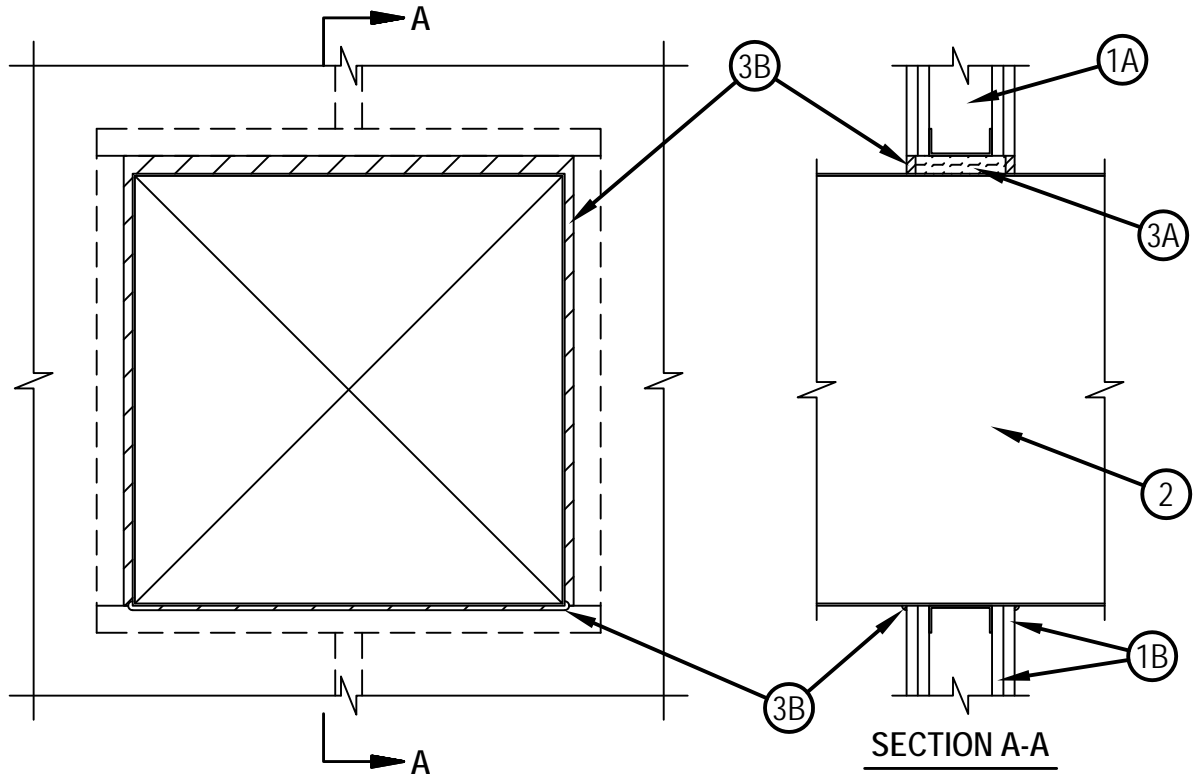
Classified by  
Underwriters Laboratories, Inc.  
to UL 1479 and CAN/ULC-S115

## System No. W-L-7143

F Ratings -- 1 and 2 Hr (See Items 1 and 2)

T Ratings -- 0 and 1/2 Hr (See Item 1)

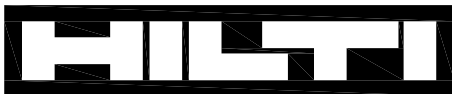
WL 7143



1. Wall Assembly -- The 1 and 2 hr fire-rated gypsum board/stud wall assembly shall be constructed of the materials and in the manner specified in the individual U400 Series Wall and Partition Designs in the UL Fire Resistance Directory and shall include the following construction features:
  - A. Studs -- Wall framing shall consist of min. 3-1/2 in. (89 mm) wide steel channel studs and spaced max 24 in. (610 mm) OC. Additional 3-1/2 in. (89 mm) wide steel studs shall be used to completely frame opening.
  - B. Gypsum Board -- One or two layers of 5/8 in. (16 mm) thick gypsum board as specified in the individual Wall and Partition Design. Max size of opening is 625 sq in. (4032 cm<sup>2</sup>) with a max dimension of 25 in. (635 mm).
2. Steel Duct -- Nom. 24 in. by 24 in. (610 by 610 mm) (or smaller) No. 24 gauge (or heavier) galv. steel duct to be installed within the firestop system. An annular space of min 1/2 in. (13 mm) to max 1 in. (25 mm) is required within the firestop system. As an option, for systems with a 2 hr F Rating only, the min annular space at the bottom of the duct may be 0 in. (point contact) for 2 hr rated assemblies only. Steel duct to be rigidly supported on both sides of wall assembly
3. Firestop System -- The firestop system shall consist of the following:
  - A. Packing Material -- Min 3-3/4 in. (95 mm) or 5 in. (127 mm) thickness of min 4 pcf (64 kg/m<sup>3</sup>) mineral wool batt insulation firmly packed into opening as a permanent form for 1 and 2 hr rated assemblies, respectively. Packing material to be recessed from both surfaces of wall to accommodate the required thickness of fill material.
  - B. Fill Void or Cavity Materials\* - Sealant -- Min 1/2 in. (13 mm) thickness of sealant applied within annulus, flush with both surfaces of wall assembly. Min 1/4 in. (6 mm) diam bead of sealant shall be applied at the duct/gypsum board interface at any point contact location, on both surfaces of wall assembly.

HILTI CONSTRUCTION CHEMICALS, DIV OF HILTI INC -- CP 606 Sealant

\*Bearing the UL Classification Mark



**Hilti Firestop Systems**

Reproduced by HILTI, Inc. Courtesy of  
Underwriters Laboratories, Inc.

November 29, 2005