

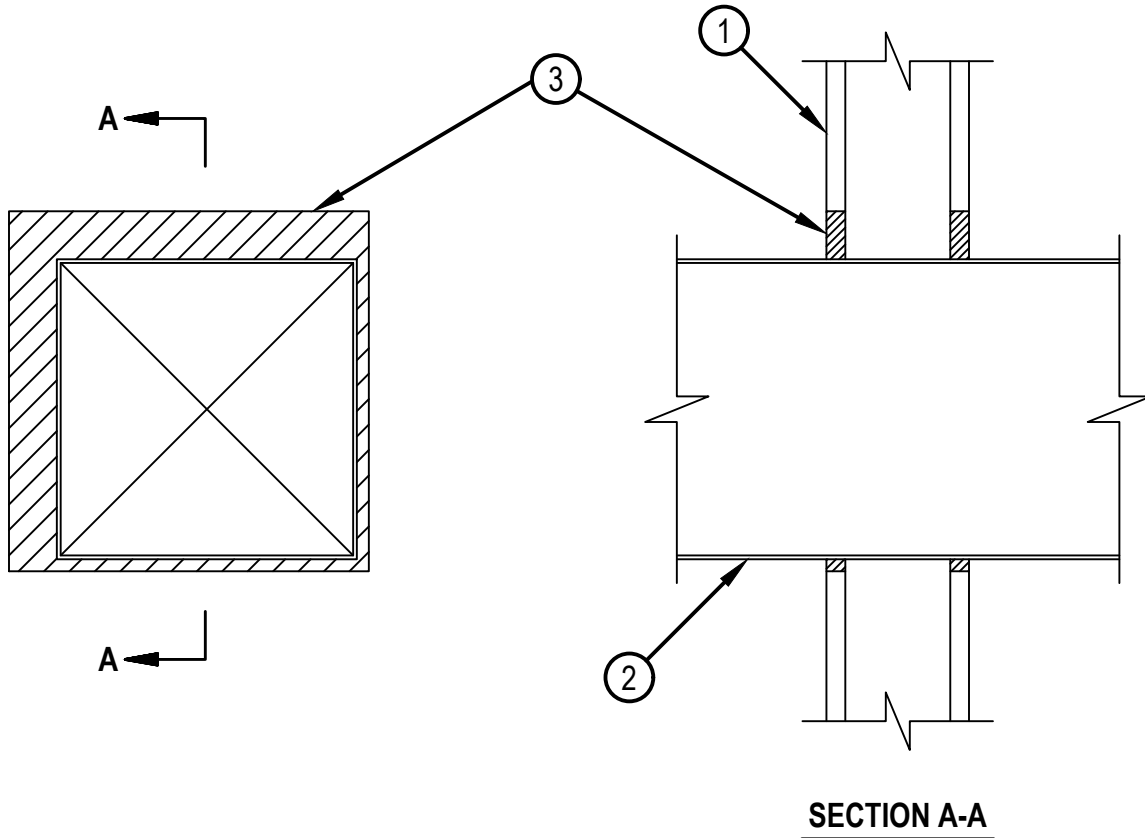


Classified by
Underwriters Laboratories, Inc.
to UL 1479 and CAN/ULC-S115

System No. W-L-7159

WL 7159

ANSI/UL2079	CAN/ULC S115
F Rating — 1 Hr	F Ratings — 1 Hr
T Rating — 1/2 Hr	FT Ratings — 1/2 Hr
	FH Ratings — 1 Hr
	FTH Ratings — 1/2 Hr



1. Wall Assembly — The 1 hr fire-rated gypsum board/stud wall assembly shall be constructed of the materials and in the manner described in the individual U300 or U400 Series Wall or Partition Design in the UL Fire Resistance Directory and shall include the following construction features :
 - A. Studs — Wall framing to consist of min 3-1/2 in. (89 mm) wide steel channel studs, fabricated from 25 MSG galv steel, spaced max 24 in. (610 mm) OC.
 - B. Gypsum Board* — One or two layers of nom 5/8 in.(16 mm) thick gypsum board, as specified in the individual Wall and Partition Design. Max area of opening is 144 sq in.(903 cm²) with max dimension of 12 in.(306 mm)
The hourly F Rating of the firestop system is equal to the hourly f rating of the wall assembly.
2. Steel Duct — Nom 10 in by 10 in.(254 by 254 mm) (or smaller) No. 28 gauge (or heavier) galv steel duct to be installed either concentrically or eccentrically within the firestop system. The annular space shall be min 1/4 in. (6 mm) to max 1 in. (25 mm). Duct to be rigidly supported on both sides of the wall assembly.
3. Fill, Void or Cavity Material - Sealant* — Min 5/8 in.(16mm) thickness of fill material applied within annular space, flush with both surfaces of wall.
HILTI CONSTRUCTION CHEMICALS, DIV OF HILTI INC — FS-ONE Sealant, FS-ONE MAX Intumescent Sealant or CP 606 Sealant

* Indicates such products shall bear the UL or cUL Certification Mark for jurisdictions employing the UL or cUL Certification (such as Canada), respectively.



Hilti Firestop Systems

Reproduced by HILTI, Inc. Courtesy of
Underwriters Laboratories, Inc.

January 27, 2015