



Classified by
Underwriters Laboratories, Inc.
to UL 1479

System No. C-AJ-2827

F Rating - 2 Hr

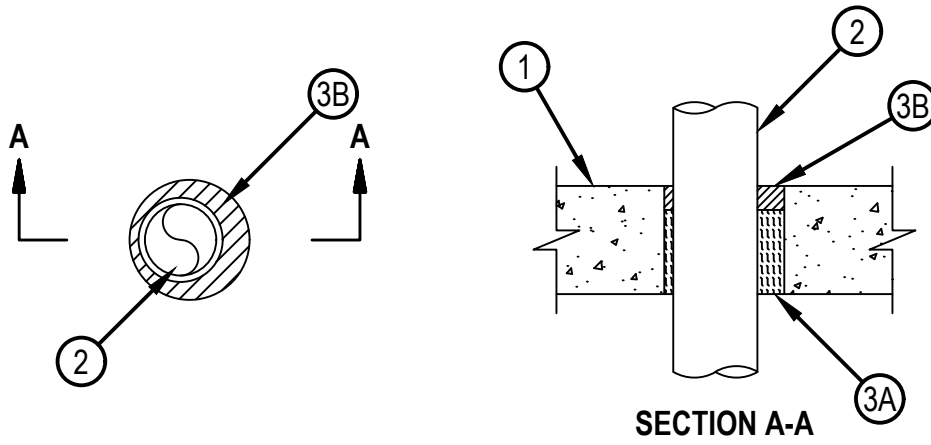
T Rating - 3/4 Hr

L Rating At Ambient - Less Than 1 CFM/sq ft

L Rating At 400 F - 4 CFM/sq ft

W Rating - Class 1 (See Item 3C)

CAJ 2827



1. Floor or Wall Assembly — Min 4-1/2 in. (114 mm) thick reinforced lightweight or normal weight (100-150 pcf or 1600-2400 kg/m³) concrete floor or min 5-1/2 in. (140 mm) thick reinforced lightweight or normal weight (100-150 pcf or 1600-2400 kg/m³) concrete wall. Wall may also be constructed of any UL Classified Concrete Blocks*. Floor may also be constructed of any min 6 in. (152 mm) thick UL Classified hollow core Precast Concrete Units. Max diam of opening is 5 in. (127 mm).

See Concrete Blocks (CAZT) and Precast Concrete Units* (CFTV) categories in the Fire Resistance Directory for names of manufacturers.

2. Through Penetrants — One nonmetallic pipe to be installed either concentrically or eccentrically within the firestop system. The annular space between pipe and periphery of opening shall be min 3/8 in. (9.5 mm) to max 1-1/8 in. (29 mm). Pipe to be rigidly supported on both sides of floor or wall assembly. The following types and sizes of nonmetallic pipes may be used:

A. Crosslinked Polyethylene (PEX) Tubing — Nom 3 in. (76 mm) diam (or smaller) SDR 9 PEX tubing for use in closed (process or supply) piping systems.

3. Firestop System — The firestop system shall consist of the following:

A. Packing Material — Min 3-1/2 in. (89 mm) thickness of min 4 pcf (64 kg/m³) mineral wool batt insulation firmly packed into opening as a permanent form. Packing material to be recessed from top surface of floor or both surfaces of wall to accommodate the required thickness of fill material. When precast concrete units are used, packing material to be recessed from top surface of floor to accommodate the required thickness of fill material and to be installed flush with bottom surface of floor.

B. Fill, Void or Cavity Material* - Sealant — Min 1 in. (25 mm) thickness of fill material applied within the annulus, flush with top surface of floor or both surfaces of wall assembly. When W Rating is required, the 1 in. (25 mm) depth of fill material shall be recessed 1/4 in. (6 mm) below top surface of floor to accommodate additional sealant (Item 3C).

HILTI CONSTRUCTION CHEMICALS, DIV OF HILTI INC — FS-ONE MAX Intumescent Sealant

C. Fill, Void or Cavity Material* — Sealant — (Optional, Not Shown) — To attain the W Rating, the FS-ONE MAX Sealant (Item 3B) to be recessed 1/4 in. (6 mm) from the top surface of the floor, and min 1/4 in. (6 mm) thickness of the CFS-S SIL GG or SL sealant installed within annular space flush with top surface of floor. W Rating applies only when CFS-S SIL GG or CFS-S SIL SL (floors only) Sealant is used.

HILTI CONSTRUCTION CHEMICALS, DIV OF HILTI INC — CFS-S SIL GG or CFS-S SIL SL (floors only) Sealant

* Indicates such products shall bear the UL or cUL Certification Mark for jurisdictions employing the UL or cUL Certification (such as Canada), respectively.



Hilti Firestop Systems

Reproduced by HILTI, Inc. Courtesy of
Underwriters Laboratories, Inc.
July 10, 2018