



Classified by
Underwriters Laboratories, Inc.
to UL 2079 and CAN/ULC-S115

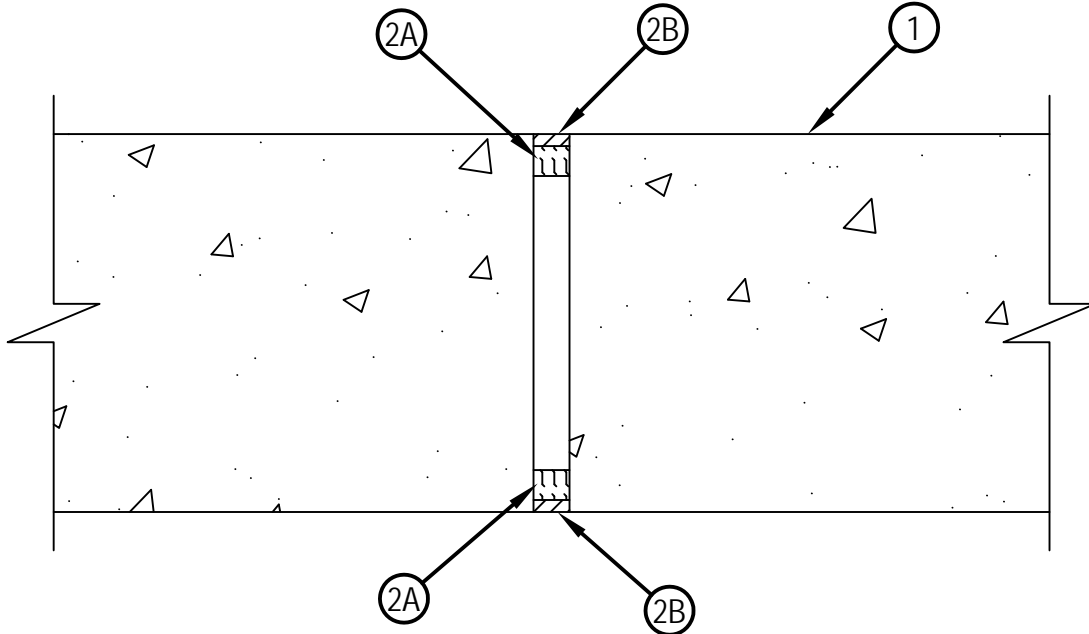
System No. WW-D-0082

Assembly Rating — 2 Hr

Nominal Joint Width — 3/4 in.

Class II Movement Capabilities — 17% Compression Or Extension

WW-D-0082



1. Wall Assembly — Min 7-7/8 in. (194 mm) thick steel reinforced lightweight or normal weight (100-150 pcf or 1600-2400 kg/m³) concrete. Wall may also be constructed of any UL Classified Concrete Blocks*.

See Concrete Blocks (CAZT) category in the Fire Resistance Directory for names of manufactures.

2. Joint System — Max width of joint (at time of installation of joint system) is 3/4 in. (19 mm). The joint system is designed to accommodate a max 17 percent compression or extension from its installed width. The joint system consists of a forming material and a fill material between the wall sections, as follows:

A. Forming Material* - Strips — Nom 5/8 in. (16 mm) wide precut mineral wool strips. The strips are compressed 25 percent and firmly packed, cut edge first, into the gap between the walls on both sides of the wall assembly. Adjoining lengths of strip to be tightly-butted with butted seams spaced min 24 in. (610 mm) apart along the length of the joint. Forming material to be recessed from wall surfaces to accommodate fill material.

HILTI CONSTRUCTION CHEMICALS, DIV OF
HILTI INC — CP 767 Speed Strips

A1. Forming Material* — As an alternate to Item 2A, min 4 pcf (64 kg/m³) density mineral wool batt forming material shall be cut into min 5/8 in. (16 mm) wide by 1 in. (25 mm) thick strips to fill the gap between the walls on both sides of the wall assembly. The strips are compressed 25 percent and firmly packed, cut edge first, into the gap between the walls on both sides of the wall assembly. Adjoining lengths of strip to be tightly-butted with butted seams spaced min 24 in. (610 mm) apart along the length of the joint. Forming material to be recessed from wall surfaces to accommodate fill material.

FIBREX INSULATIONS INC — FBX Safing Insulation

B. Fill, Void or Cavity Material* - Sealant — Min 1/4 in. (6 mm) thickness of fill material applied within the joint, flush with both surfaces of the wall.

HILTI CONSTRUCTION CHEMICALS, DIV OF
HILTI INC — CP606 Sealant

*Bearing the UL Classification Mark



Hilti Firestop Systems

Reproduced by HILTI, Inc. Courtesy of
Underwriters Laboratories, Inc.

April 15, 2009